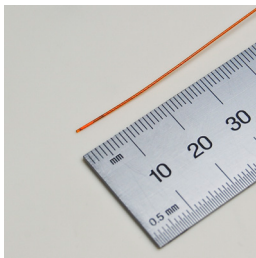


3D Guidance[®]

Sensors

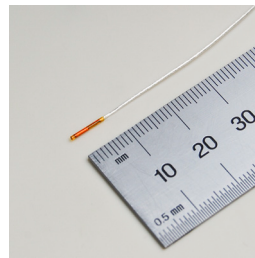
The 6DOF sensors come in a variety of sizes including the general purpose reference sensor that consists of an 8 mm square cross-section down to 0.56 mm diameter cylindrical sensor for use in the smallest tools.



Model 55

6DOF Sensor

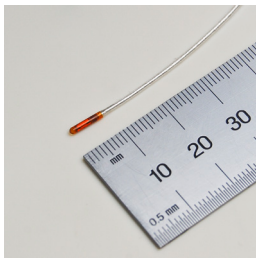
- Sensor OD = 0.56 mm Max
- Cable OD = 3.8 mm
- Sensor Length = 300 mm
- Cable length = 2.2 m



Model 90

6DOF Sensor

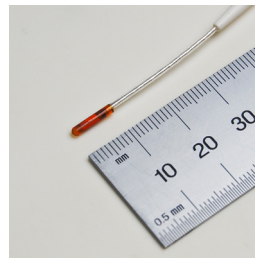
- Sensor OD = 0.9 mm
- Cable OD = 0.6 mm
- Sensor Length = 7.25 mm
- Cable length = 3.3 m



Model 130

6DOF Sensor

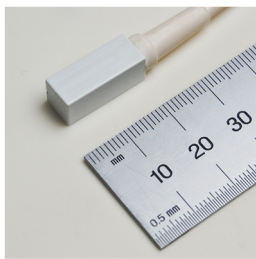
- Sensor OD = 1.5 mm
- Cable OD = 1.2 mm
- Sensor Length = 7.7 mm
- Cable length = 3.3 m



Model 180

6DOF Sensor

- Sensor OD = 2.0 mm
- Cable OD = 1.2 mm
- Sensor Length = 9.9 mm
- Cable length = 3.3 m



Model 800

6DOF Sensor

- Sensor OD = 7.9 mm
- Cable OD = 3.8 mm
- Sensor Length = 19.8 mm
- Cable length = 3.3 m

